



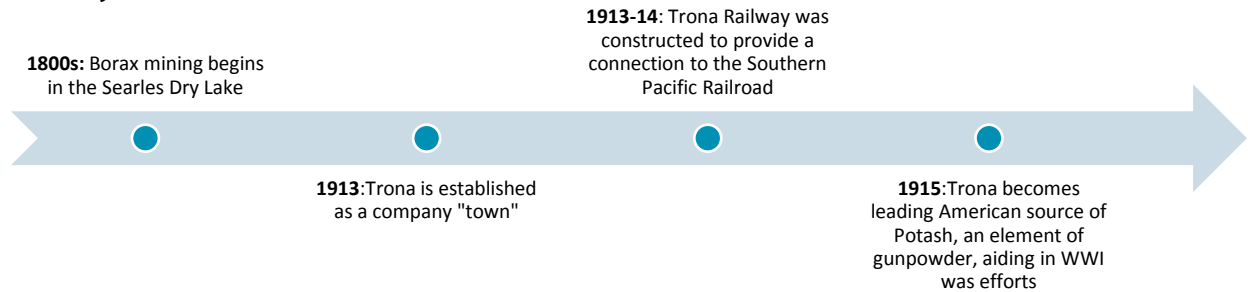
Community Profile

DRAFT

Overview

The community profile is a summary of the social, cultural, economic and historic dimensions of the community. It is a gathering of objective data collected through secondary sources. The profile, with information gathered from general sources, highlights essential facets and “tell the story” of the Trona communities of Trona, Searles Valley, Argus, and Pioneer Point.

History

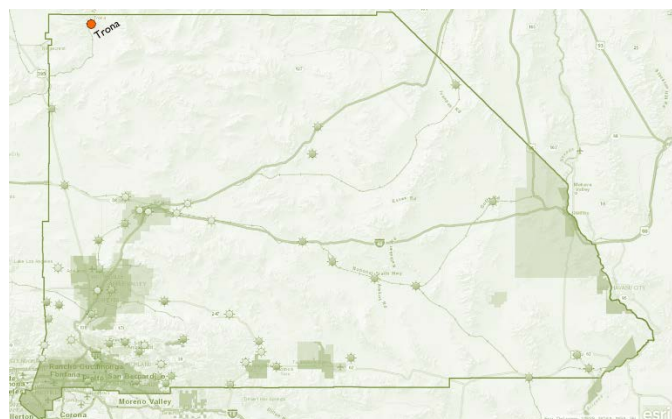


John W. Searles discovered the borax in the dry lake bed of Searles Lake in the latter half of the 18th century. He brought the now famous 20-Mule-team wagons to haul the borax to San Pedro, California. The Trona community began as a company “town” in 1913 for the California Trona Company due to the areas rich mineral deposits. Employees were paid in Trona Script. The company also built a library, housing and a recreational hall for employees. Soon after, the construction of Trona Railway was completed and offered a connection to the Southern Pacific line. It was even used to transport children to the Trona Elementary School. Passenger service was discontinued in 1937. Mining borax, soda ash, and Potash drew many mining companies to the area, some more successful than others, causing fluctuations in job opportunities. This is still true today causing a declining population rate. Today, the area is home to Searles Valley Minerals providing several forms of borax. Searles Dry Lake contains rich deposits of chemicals including 98 of the 104 known naturally occurring chemical elements. The Valley is known for its isolation and the Trona Pinnacles, as unusual landscape consisting of more than 500 tufa spires, some as high as 140 feet, rising from the bed of Searles Lake basin.

Source(s): <https://web.archive.org/web/20090220173213/http://maturango.org/SearlesTime.html>, <http://mojavedesert.net/johnsearles/>

Location & Geography

Trona Communities are located in the Northwestern portion of San Bernardino County, in the Greater Mojave Desert along the border of San Bernardino and Inyo County. The community is home to a diverse landscape including geologically created Searles Dry Lake and Trona Pinnacles.



Community Structure (Physical Characteristics)

Residential: Residences are a mix of single family residential dwellings that are one story homes set close to the street and multi-family dwelling units laid out in a grid pattern.

Commercial: Commercial uses are concentrated in the center of the community along Highway 178. This district consists of a mixture of different businesses that serve the community in modern one-story buildings with surface parking in front.

Transportation: The main thoroughfare is Highway 178 (Trona Road), a paved two lane highway with one travel lane in each direction. Local roads are paved and lack pedestrian and bicycle facilities. No public transit serves the plan area. The WalkScore for Trona indicates that all errands need to be completed by car.

Sources: Google Earth, County of San Bernardino, WalkScore.com

Community Amenities

Parks and Trails: The Trona Pinnacles National Natural Landmark, located about 7 miles off Trona Road, offers hiking, camping, and picnicking. The surrounding area also provides opportunities for Mountain Biking and Off-Road Cycling. The Trona Community Pool is also available to the community for swimming.

Hospitals: There are no hospitals located within the plan area, however there is a medical clinic.

Schools: The communities are served by the Trona Elementary School and the Trona High School. The schools are operated by the Trona Joint Unified School District.

Fire Protection: Trona Communities are served by the San Bernardino County Fire Station (PCF #57). The Trona Fire Station is staffed by paid call firefighters.

Police Protection: The plan area is served by the San Bernardino County Sheriff's Department out of the

Barstow Police Station. The Trona Substation serves Trona and Searles Valley. One corporal and two patrol deputies serve this area. The deputies are also assisted by Sheriff's Volunteers from the Trona Citizens on Patrol.

Source: Trona Joint Unified School District, County of San Bernardino Fire and Sheriff Departments, Wikipedia and the Bureau of Land Management

Community Organizations

Trona Care	Elks Lodge 82750 Trona Rd, Trona, CA 93562
Trona Neighborhood Watch	Searles Valley Historical Society P. O. Box 630 13193 Main Street Trona, CA 93592-0630 http://www1.iwvisp.com/svhs/index.html
Trona Community Senior Center 13187 Jones St, Trona, CA 93562 (760) 372-5889	Searles Valley Gem and Mineral Society P. O. Box 966 13337 Main St Trona, CA 93592-0966

Code Enforcement

Common issues that are noted within the community include junk and trash, excessive outside storage, inoperative vehicles and construction activities without permits.

Source: San Bernardino County Code Enforcement

Community Events

- **Canyon Clean Up.** Annually
- **Gem-o-Rama**
- **Trona Gem and Mineral Show**
- **Community Potluck.** Monthly
- **Trona Care clean up events**