

Appendix C.

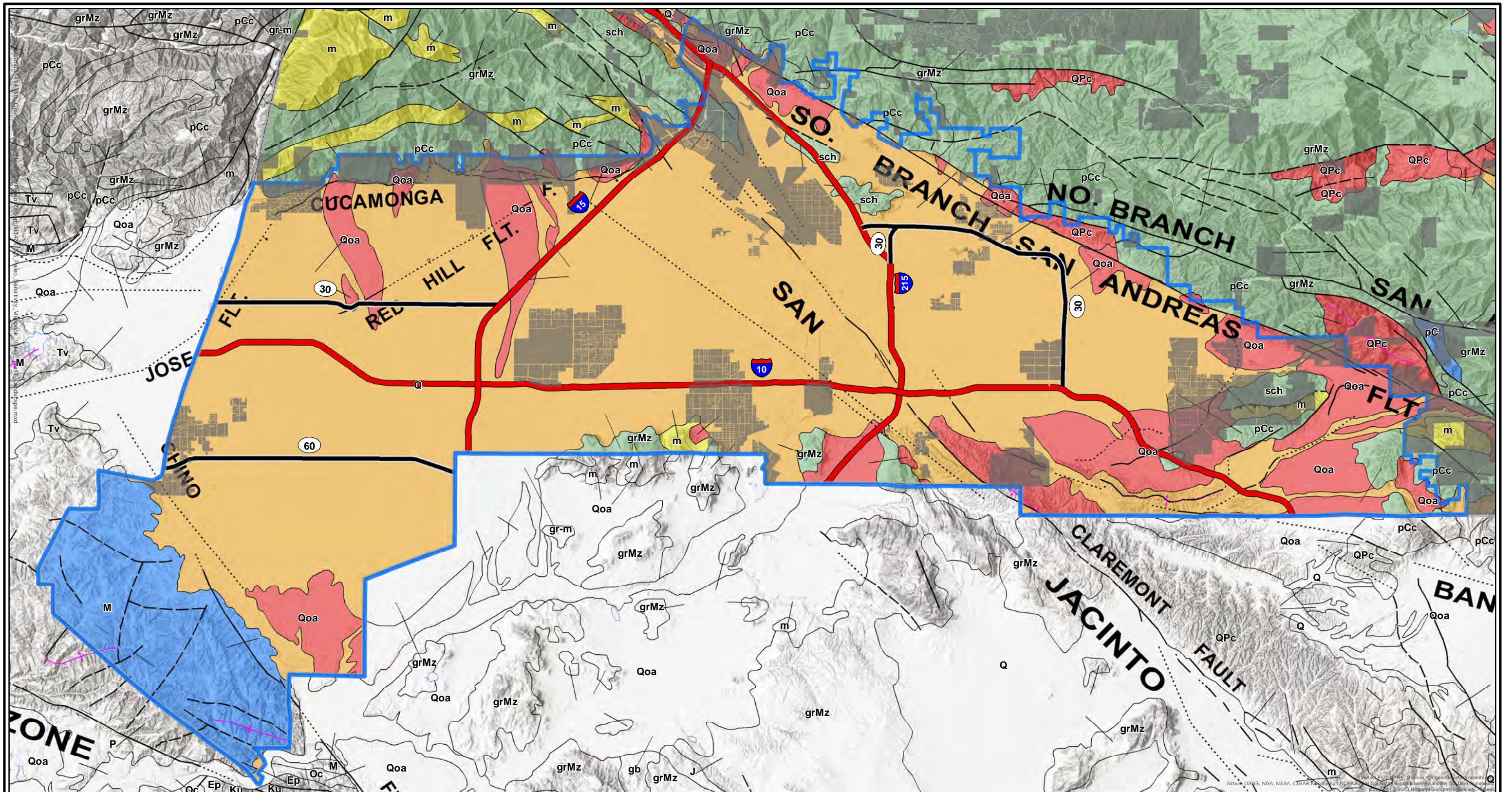
Paleontological Sensitivity Maps of San Bernardino County Regions

Figure 1 – Paleontological Sensitivity Map of the Valley Region (1 map)

Figure 2 – Paleontological Sensitivity Map of the Mountain Region (1 map)

Figure 3 – Paleontological Sensitivity Map of the East Desert Region (1 map)

Figure 4 – Paleontological Sensitivity Map of the North Desert Region (13 maps)

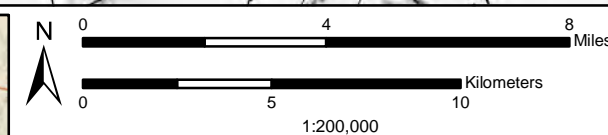


Legend

- | | | |
|---------------------|-------------------------------|----------------------------------|
| Valley Region | fault, approx. located | dextral fault, certain |
| County Control Area | fault, certain | sinistral fault, approx. located |
| Interstate | fault, concealed | normal fault, certain |
| State Highway | fault, concealed, queried | normal fault, concealed |
| bedding | scratch boundary | normal fault, concealed, queried |
| contact, certain | water boundary | |
| | thrust fault, approx. located | |

Geologic Sensitivity

- Varies
- High
- Low-to-High
- Low
- None

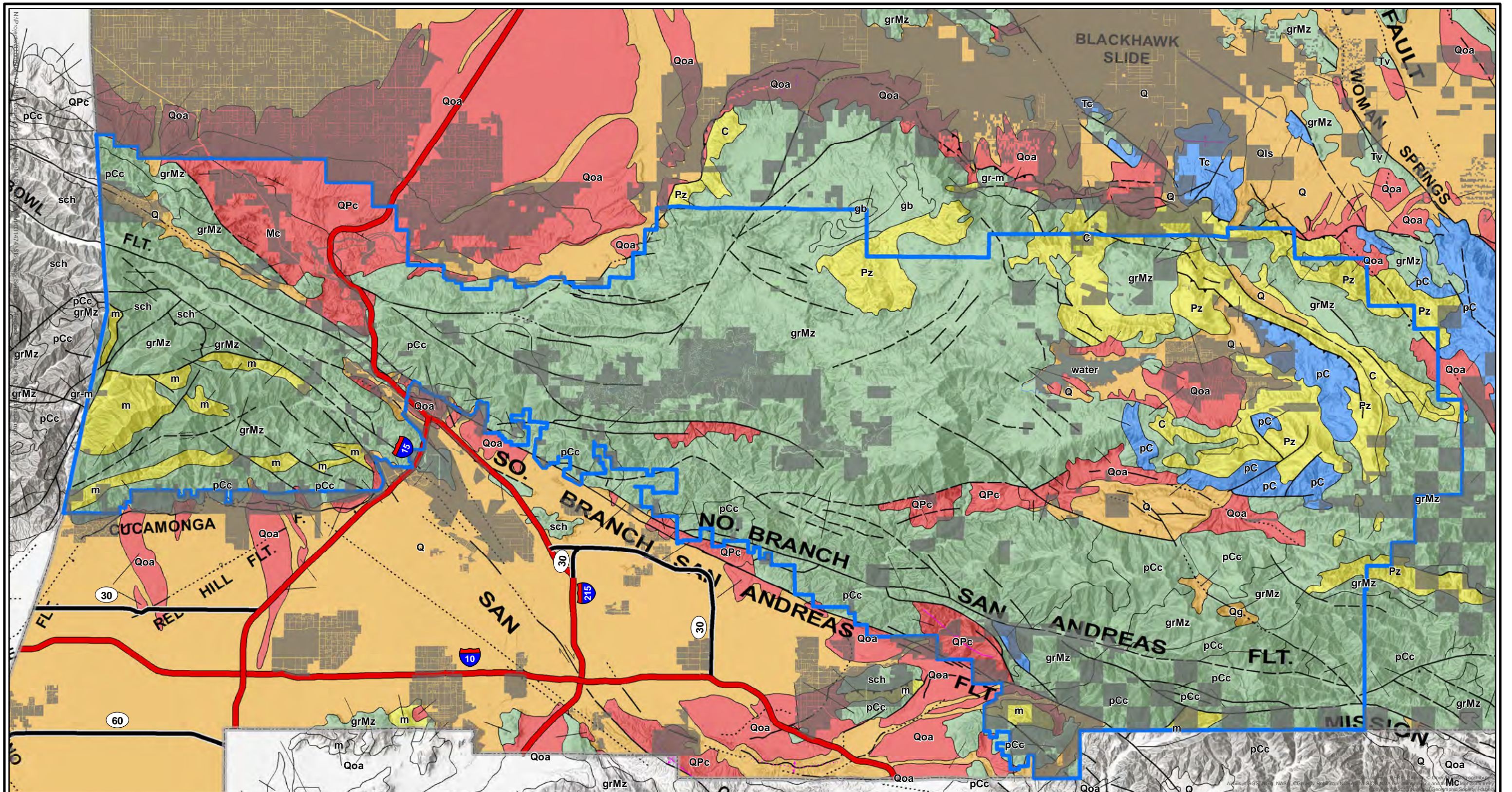


California Geological Survey (C.W. Jennings, 1977)
 San Bernardino County, CA
 NAD 1983 UTM Zone 11N
 5/30/2018

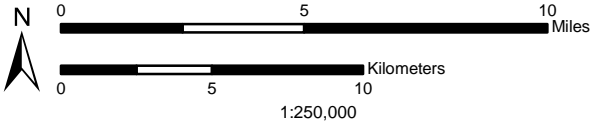


51 West Dayton Street
 Pasadena, California 91105

Phone: 626.240.0587
 Fax: 626.240.0607
 www.swca.com



Legend			Geologic Sensitivity
Mountains Region	fault, certain	dextral fault, certain	Varies
Interstate	fault, concealed	sinistral fault, approx. located	High
State Highway	fault, concealed, queried	thrust fault, certain (2)	Low-to-High
bedding	scratch boundary	normal fault, certain	Low
contact, certain	water boundary	normal fault, approx. located	None
fault, approx. located	thrust fault, certain	normal fault, concealed	
	thrust fault, approx. located		

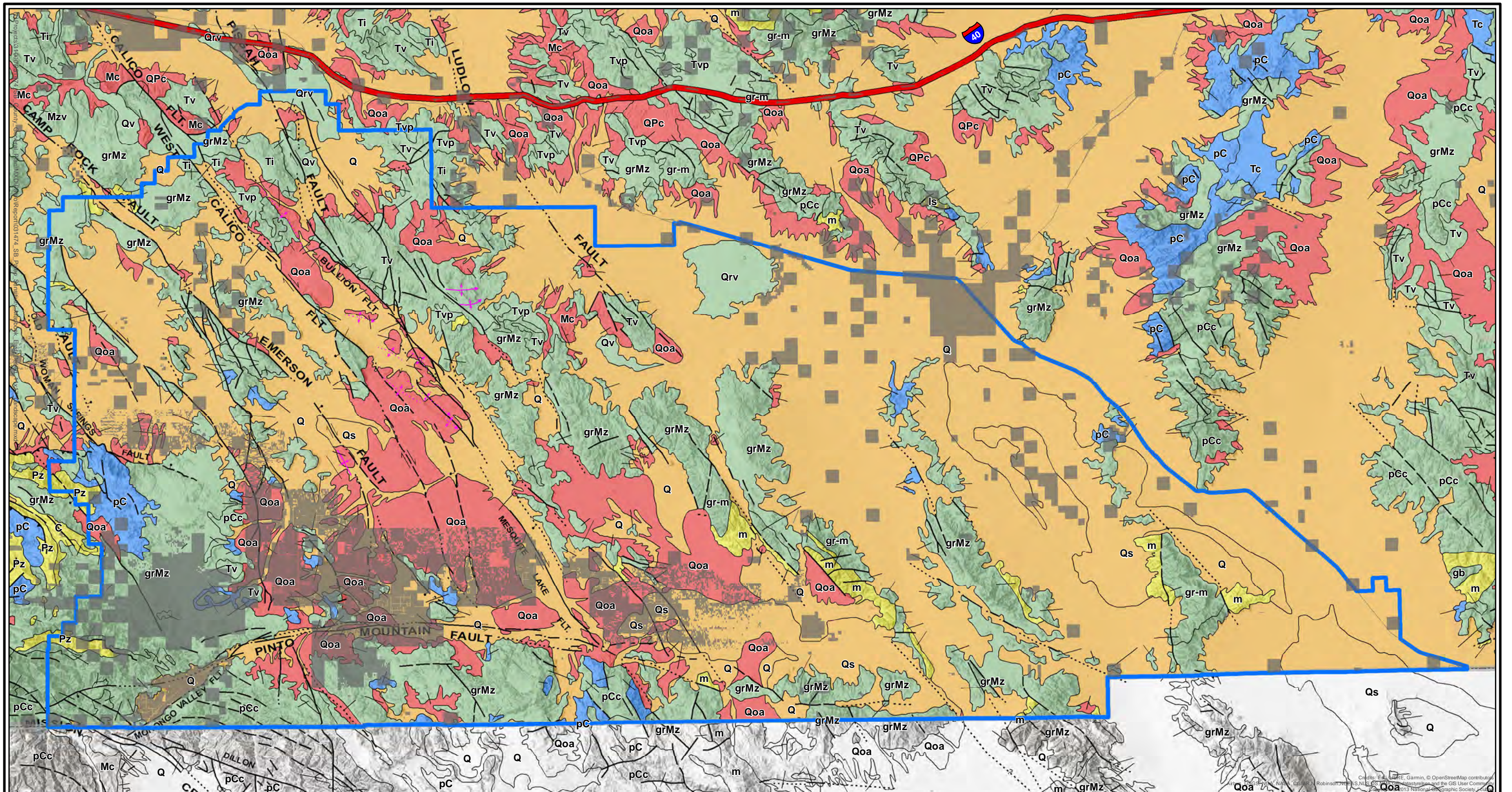


California Geological Survey (C.W. Jennings, 1977)
 San Bernardino County, CA
 NAD 1983 UTM Zone 11N
 5/30/2018

SWCA
 ENVIRONMENTAL CONSULTANTS

51 West Dayton Street
 Pasadena, California 91105

Phone: 626.240.0587
 Fax: 626.240.0607
 www.swca.com

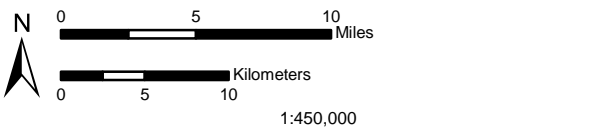


Legend

- | | | |
|------------------------|---------------------------|--------------------------------|
| East Desert Region | fault, certain | dextral fault, approx. located |
| County Control Area | fault, concealed | sinistral fault, certain |
| Interstate | fault, concealed, queried | thrust fault, certain (2) |
| bedding | scratch boundary | normal fault, certain |
| contact, certain | water boundary | normal fault, approx. located |
| fault, approx. located | thrust fault, certain | normal fault, concealed |
| | dextral fault, certain | |

Geologic Sensitivity

- | |
|-------------|
| Varies |
| High |
| Low-to-High |
| Low |
| None |



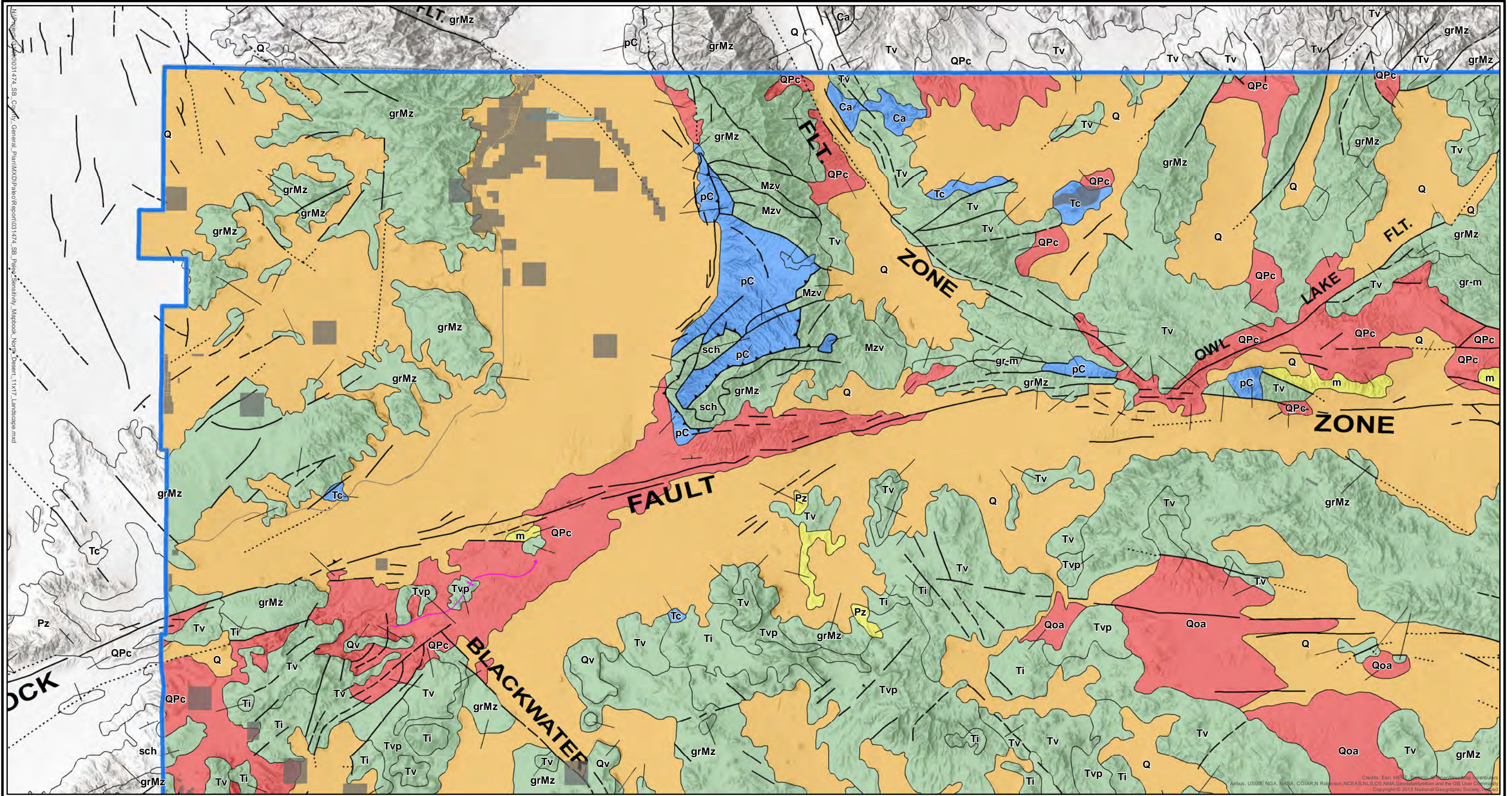
California Geological Survey (C.W. Jennings, 1977)
San Bernardino County, CA

NAD 1983 UTM Zone 11N
5/30/2018



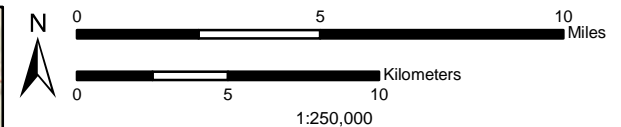
51 West Dayton Street
Pasadena, California 91105

Phone: 626.240.0587
Fax: 626.240.0607
www.swca.com



Legend

North Desert Region	fault, concealed	normal fault, certain
County Control Area	fault, concealed, queried	Geologic Sensitivity
bedding	water boundary	Varies
contact, certain	thrust fault, certain	High
fault, approx. located	dextral fault, certain	Low-to-High
fault, certain	sinistral fault, certain	Low
	thrust fault, certain (2)	None



California Geological Survey (C.W. Jennings, 1977)
 San Bernardino County, CA
 NAD 1983 UTM Zone 11N
 6/12/2018

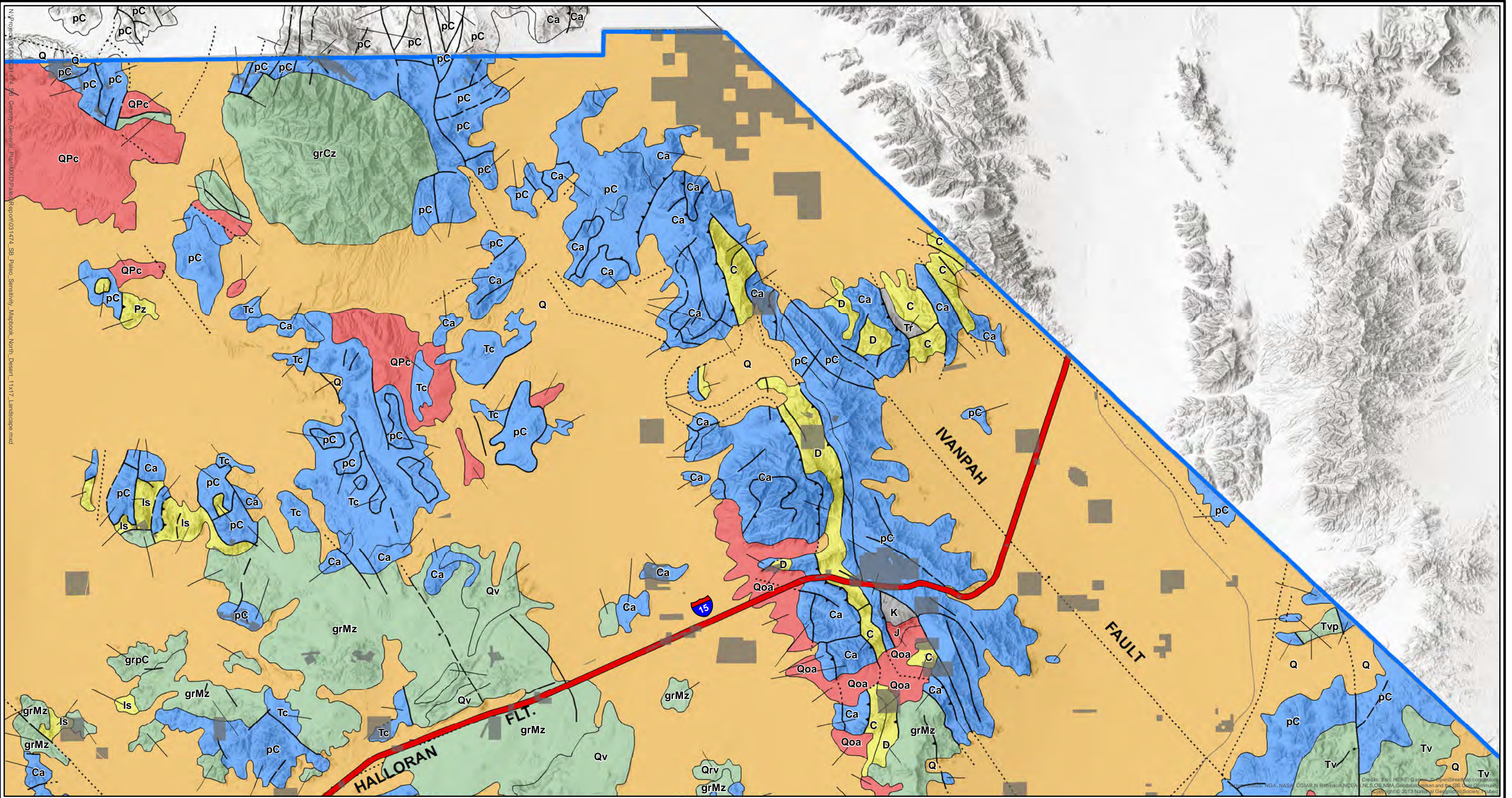


51 West Dayton Street
 Pasadena, California 91105

Phone: 626.240.0587
 Fax: 626.240.0607
 www.swca.com

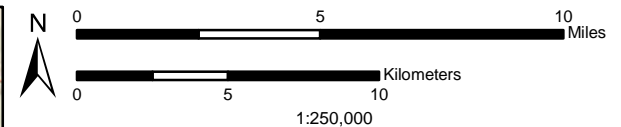
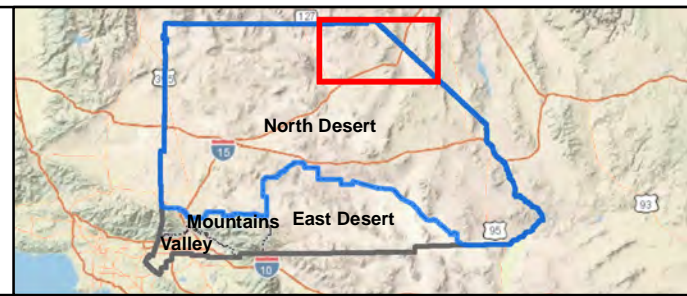
M:\Projects\031474_SB_Co\17_General_Plans\XCD\Drawings\031474_SB_Palms_Sensitivity_Mapbook_North_Desert_11x17_Landscape.mxd

Credits: Esri, HERE, DeLorme, Swire, GeoEye, IGN, Aerotech, Earthstar, CNES, Airbus, USGS, NGA, NASA, CGIAR, N. Robinson, NCEAS, NLS, OS, NMA, Geodatasystem and the GIS User Community
 Copyright © 2013 National Geographic Society



Legend

North Desert Region	map boundary	normal fault, concealed	Geologic Sensitivity
County Control Area	thrust fault, certain		Undetermined
Interstate	thrust fault, approx. located		Varies
contact, certain	thrust fault, certain (2)		High
fault, approx. located	thrust fault, concealed (2)		Low-to-High
fault, certain	normal fault, certain		Low
fault, concealed	normal fault, approx. located		None



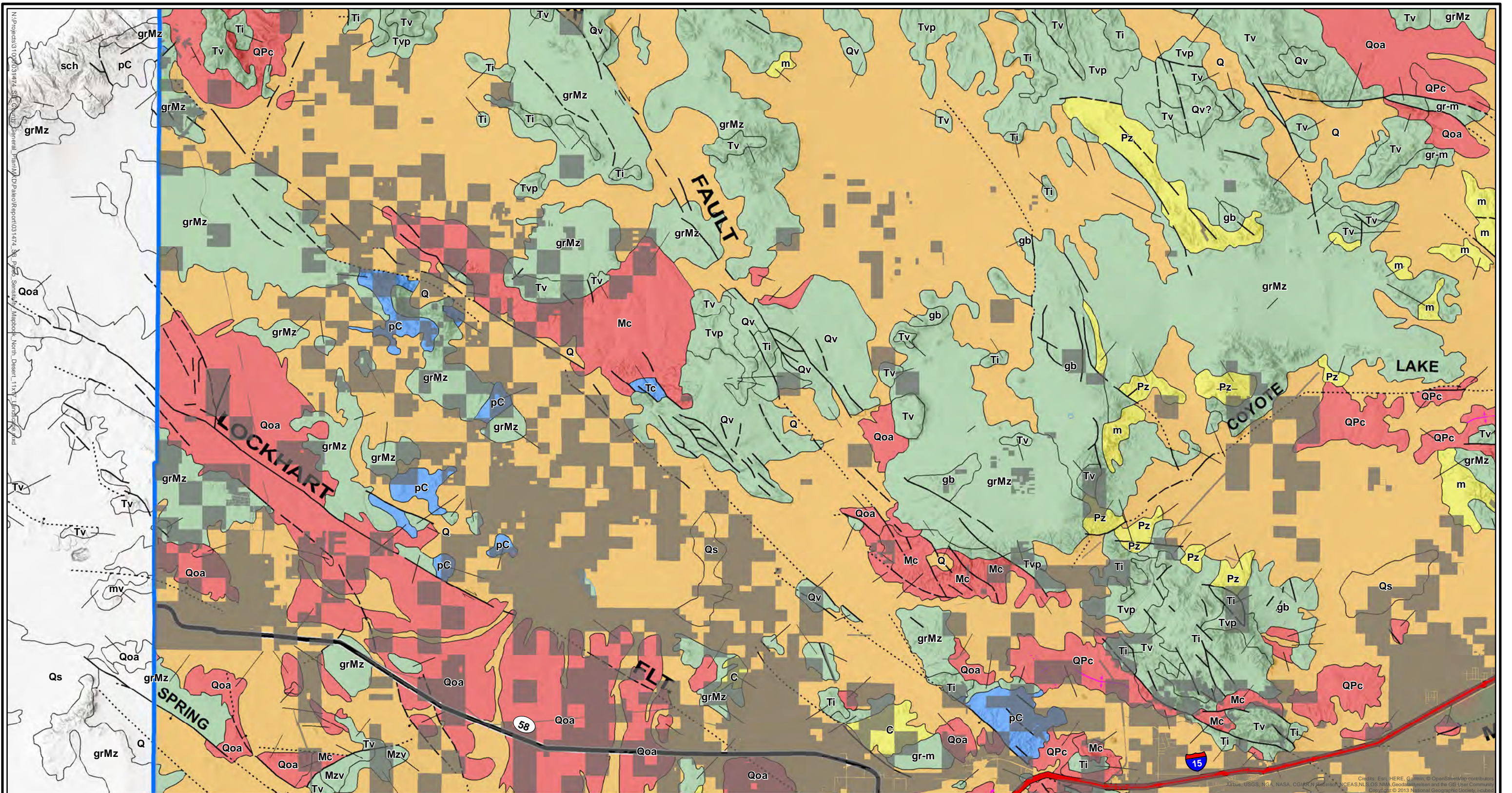
California Geological Survey (C.W. Jennings, 1977)
 San Bernardino County, CA

NAD 1983 UTM Zone 11N
 5/31/2018

SWCA
 ENVIRONMENTAL CONSULTANTS

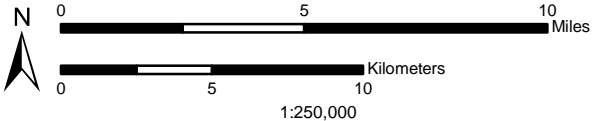
51 West Dayton Street
 Pasadena, California 91105

Phone: 626.240.0587
 Fax: 626.240.0607
 www.swca.com



Legend

North Desert Region	fault, approx. located	normal fault, certain	Geologic Sensitivity
County Control Area	fault, certain	normal fault, approx. located	
Interstate	fault, concealed	normal fault, concealed	
State Highway	fault, concealed, queried	scratch boundary	
bedding	water boundary	contact, certain	Varies
contact, certain	dextral fault, certain		High
			Low-to-High
			Low
			None

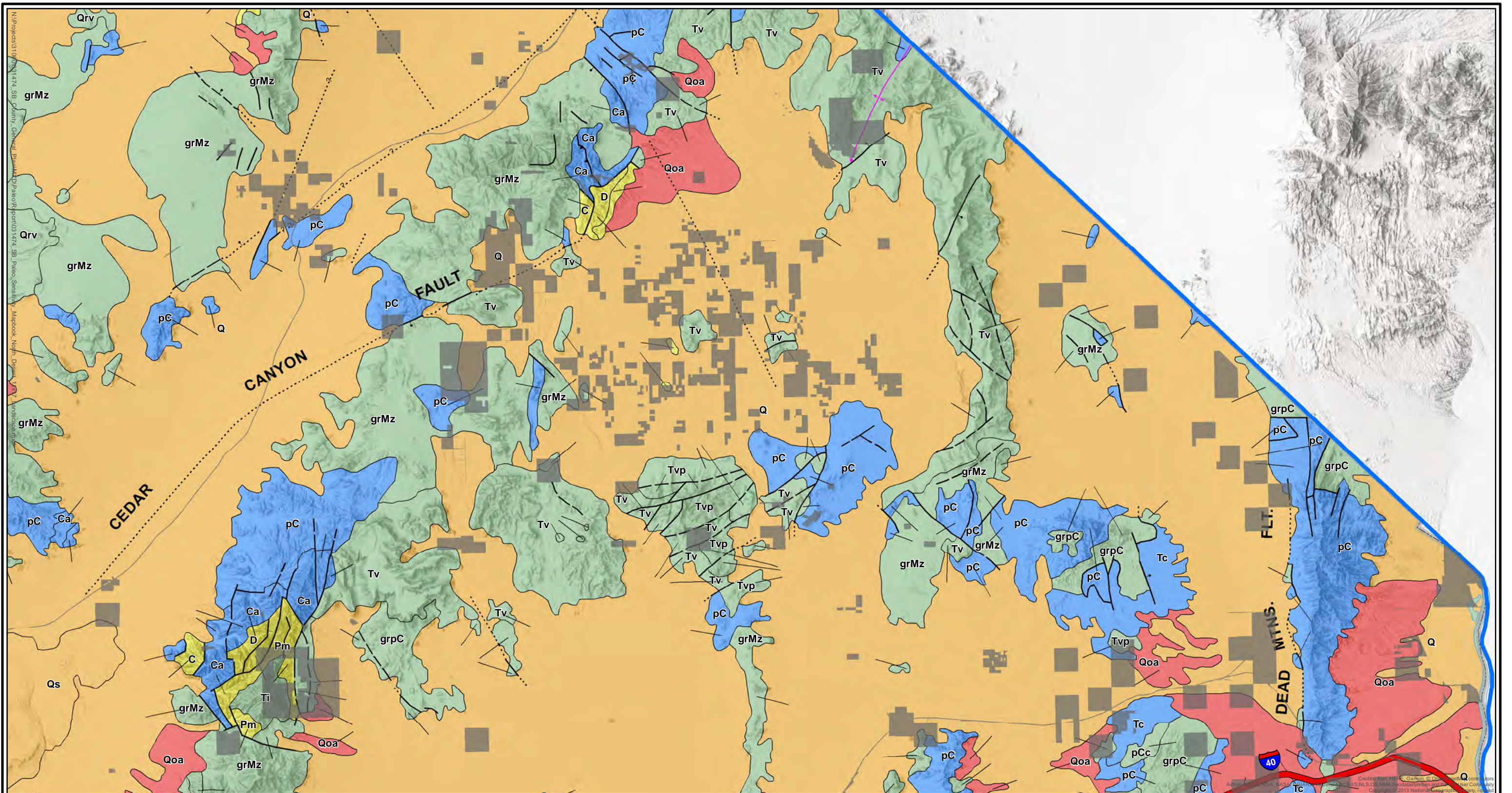


California Geological Survey (C.W. Jennings, 1977)
 San Bernardino County, CA
 NAD 1983 UTM Zone 11N
 5/31/2018

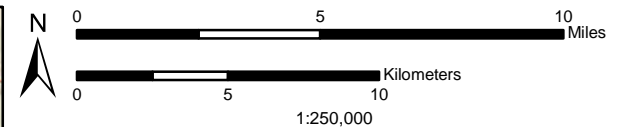
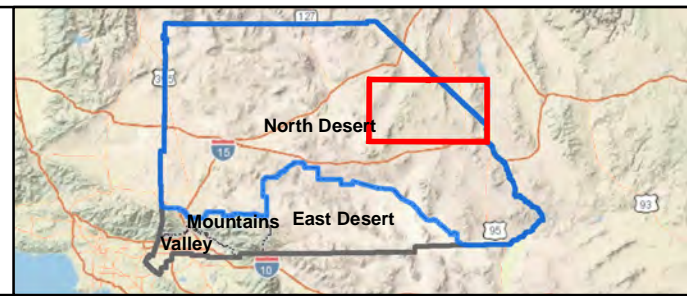
SWCA
 ENVIRONMENTAL CONSULTANTS

51 West Dayton Street
 Pasadena, California 91105

Phone: 626.240.0587
 Fax: 626.240.0607
 www.swca.com



North Desert Region	fault, concealed, queried	normal fault, concealed
County Control Area	map boundary	Geologic Sensitivity
Interstate	water boundary	Varies
contact, certain	thrust fault, certain	High
fault, approx. located	thrust fault, certain (2)	Low-to-High
fault, certain	normal fault, certain	Low
fault, concealed	normal fault, approx. located	None

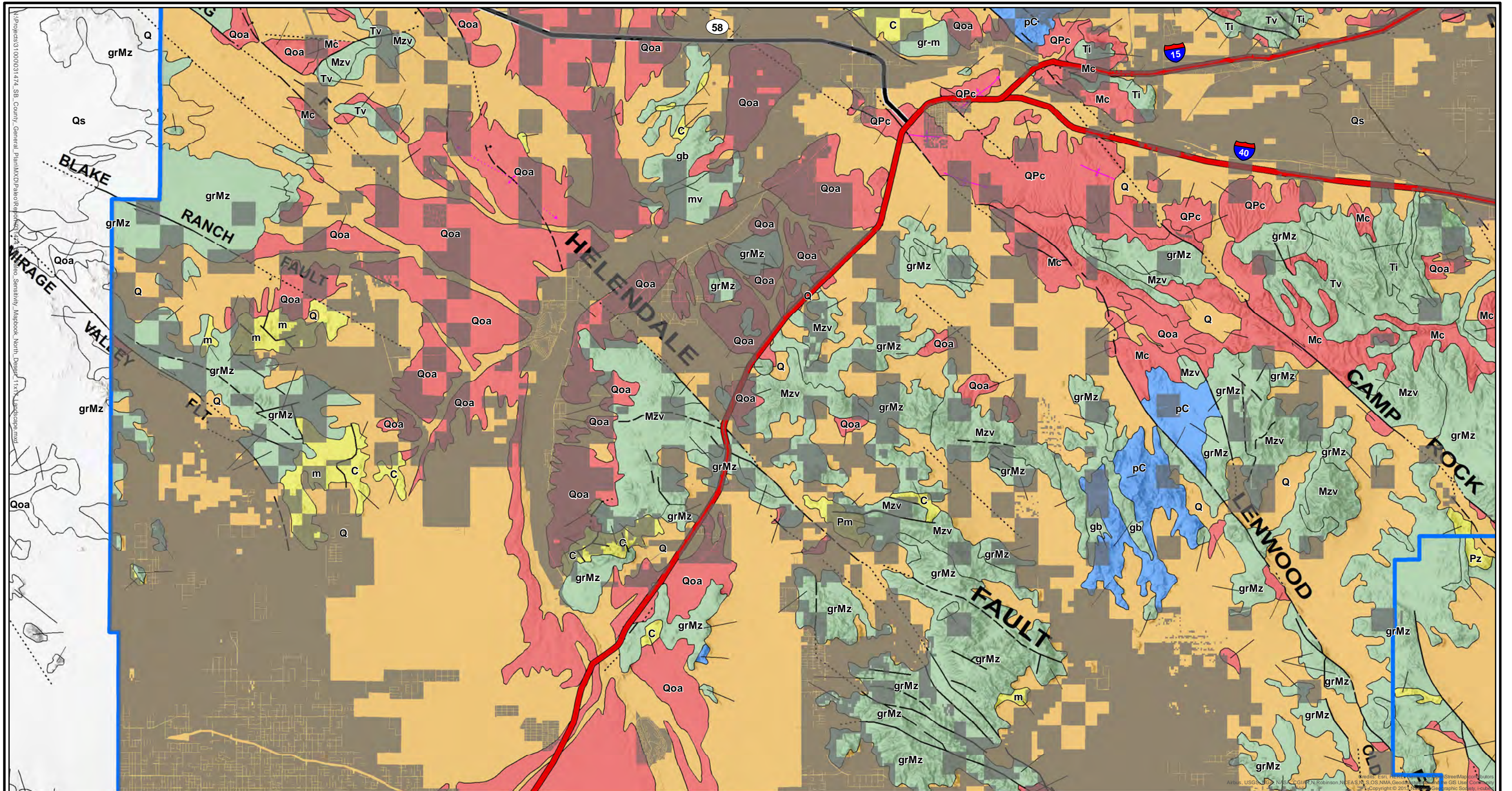


California Geological Survey (C.W. Jennings, 1977)
 San Bernardino County, CA
 NAD 1983 UTM Zone 11N
 5/31/2018



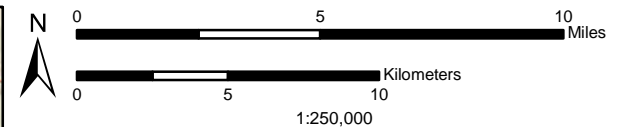
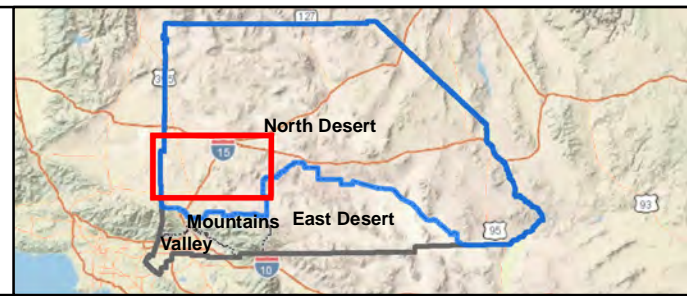
51 West Dayton Street
 Pasadena, California 91105

Phone: 626.240.0587
 Fax: 626.240.0607
 www.swca.com



- Legend**
- North Desert Region
 - County Control Area
 - Interstate
 - State Highway
 - bedding
 - contact, certain
 - fault, approx. located
 - fault, certain
 - fault, concealed
 - scratch boundary
 - dextral fault, certain
 - dextral fault, concealed
 - normal fault, certain
 - normal fault, approx. located
 - normal fault, concealed

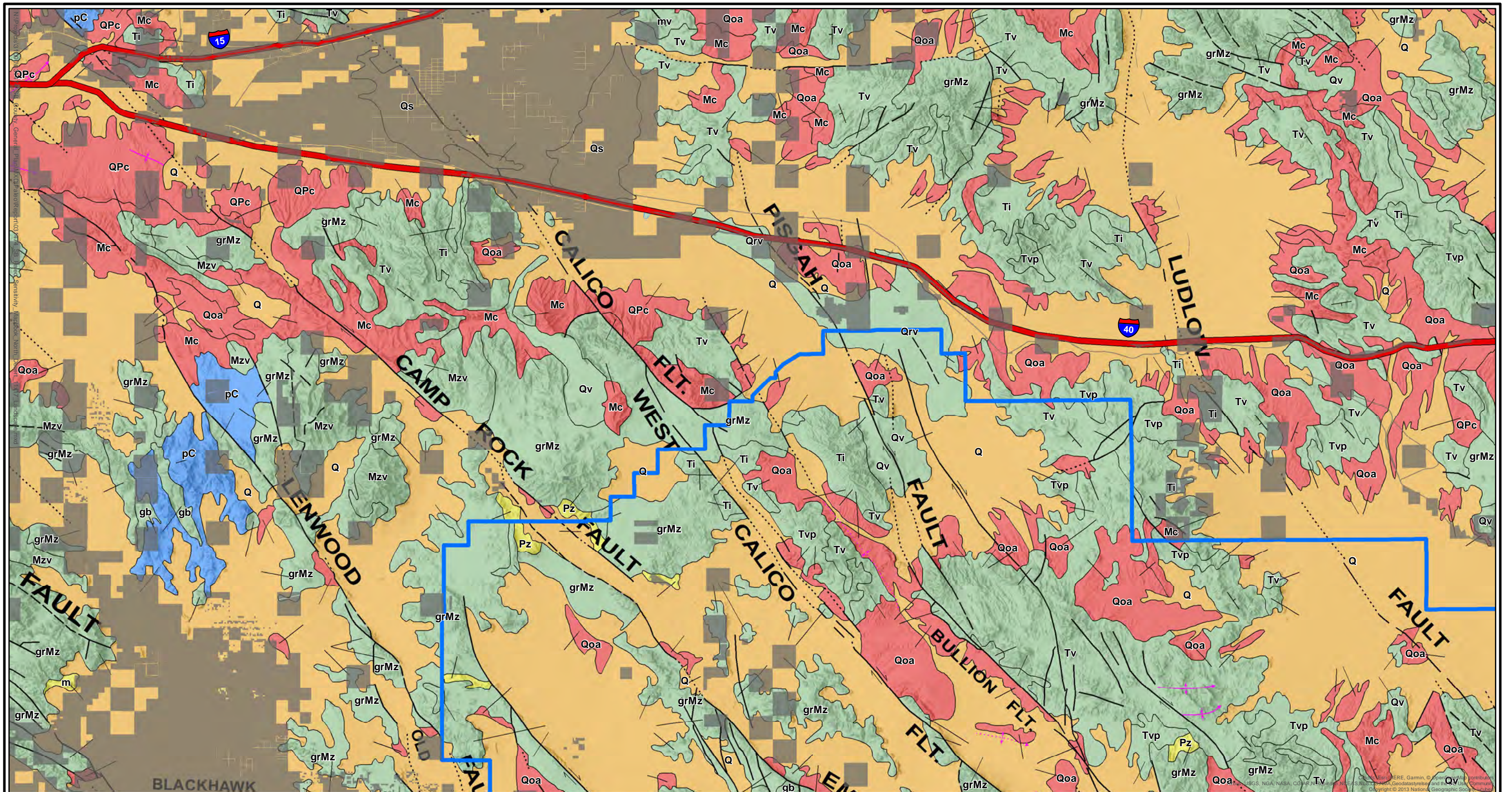
- Geologic Sensitivity**
- Varies
 - High
 - Low-to-High
 - Low
 - None



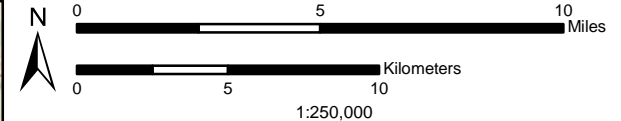
California Geological Survey (C.W. Jennings, 1977)
 San Bernardino County, CA
 NAD 1983 UTM Zone 11N
 5/31/2018



51 West Dayton Street
 Pasadena, California 91105
 Phone: 626.240.0587
 Fax: 626.240.0607
 www.swca.com



- Legend**
- North Desert Region
 - County Control Area
 - Interstate
 - bedding
 - contact, certain
 - fault, approx. located
 - fault, certain
 - fault, concealed
 - scratch boundary
 - water boundary
 - dextral fault, certain
 - normal fault, certain
 - normal fault, approx. located
 - normal fault, concealed
- Geologic Sensitivity**
- Varies
 - High
 - Low-to-High
 - Low
 - None

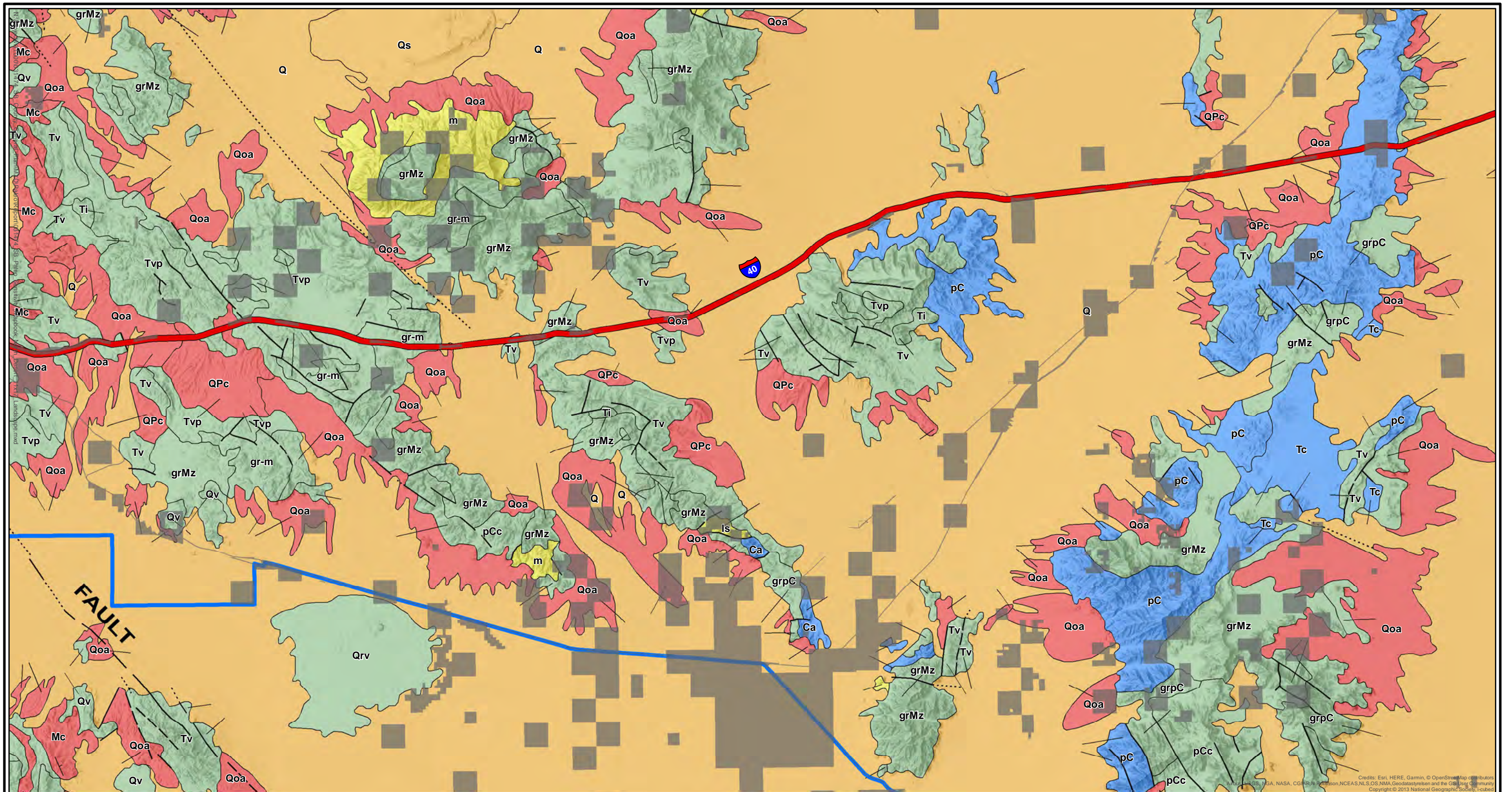


California Geological Survey (C.W. Jennings, 1977)
 San Bernardino County, CA
 NAD 1983 UTM Zone 11N
 5/31/2018



51 West Dayton Street
 Pasadena, California 91105

Phone: 626.240.0587
 Fax: 626.240.0607
 www.swca.com

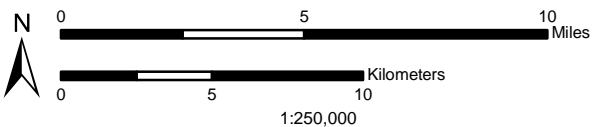
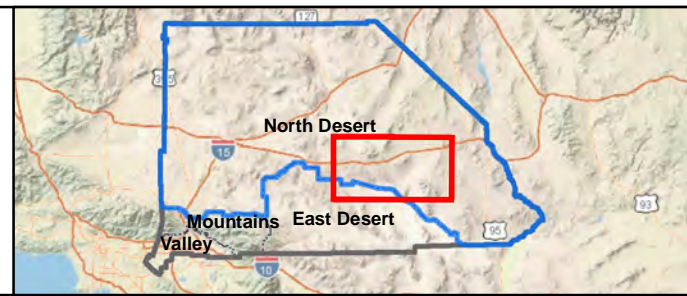


Legend

- North Desert Region
- County Control Area
- Interstate
- bedding
- contact, certain
- fault, approx. located

- fault, certain
- fault, concealed

- Geologic Sensitivity**
- Varies
 - High
 - Low-to-High
 - Low
 - None



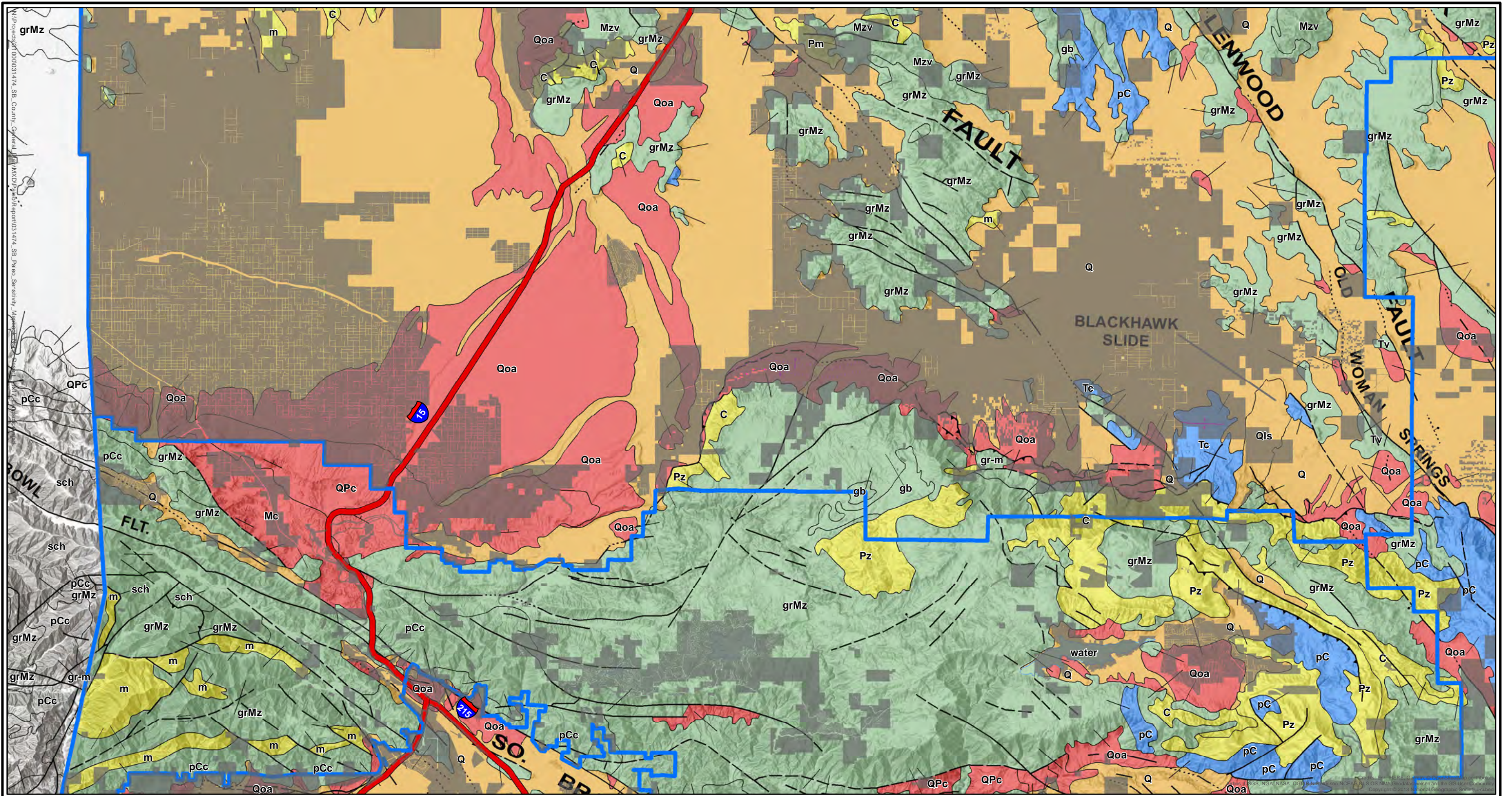
California Geological Survey (C.W. Jennings, 1977)
 San Bernardino County, CA
 NAD 1983 UTM Zone 11N
 5/31/2018



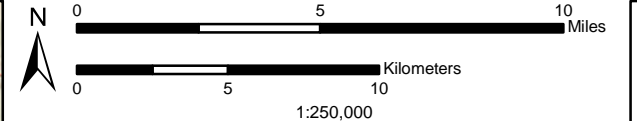
51 West Dayton Street
 Pasadena, California 91105

Phone: 626.240.0587
 Fax: 626.240.0607
 www.swca.com

Credits: Esri, HERE, Garmin, © OpenStreetMap contributors, Swisstopo, GEBCO, USGS, NOAA, NGA, NASA, CIGER, NPS, NCEAS, NLS, OS, NMA, Geodatasystemen and the GIS User Community
 Copyright © 2013 National Geographic Society, i-cubed



Legend			Geologic Sensitivity
North Desert Region	fault, certain	sinistral fault, approx. located	Varies
County Control Area	fault, concealed	thrust fault, certain (2)	High
Interstate	scratch boundary	normal fault, certain	Low
bedding	water boundary	normal fault, approx. located	None
contact, certain	thrust fault, certain	normal fault, concealed	
fault, approx. located	thrust fault, approx. located		
	dextral fault, certain		

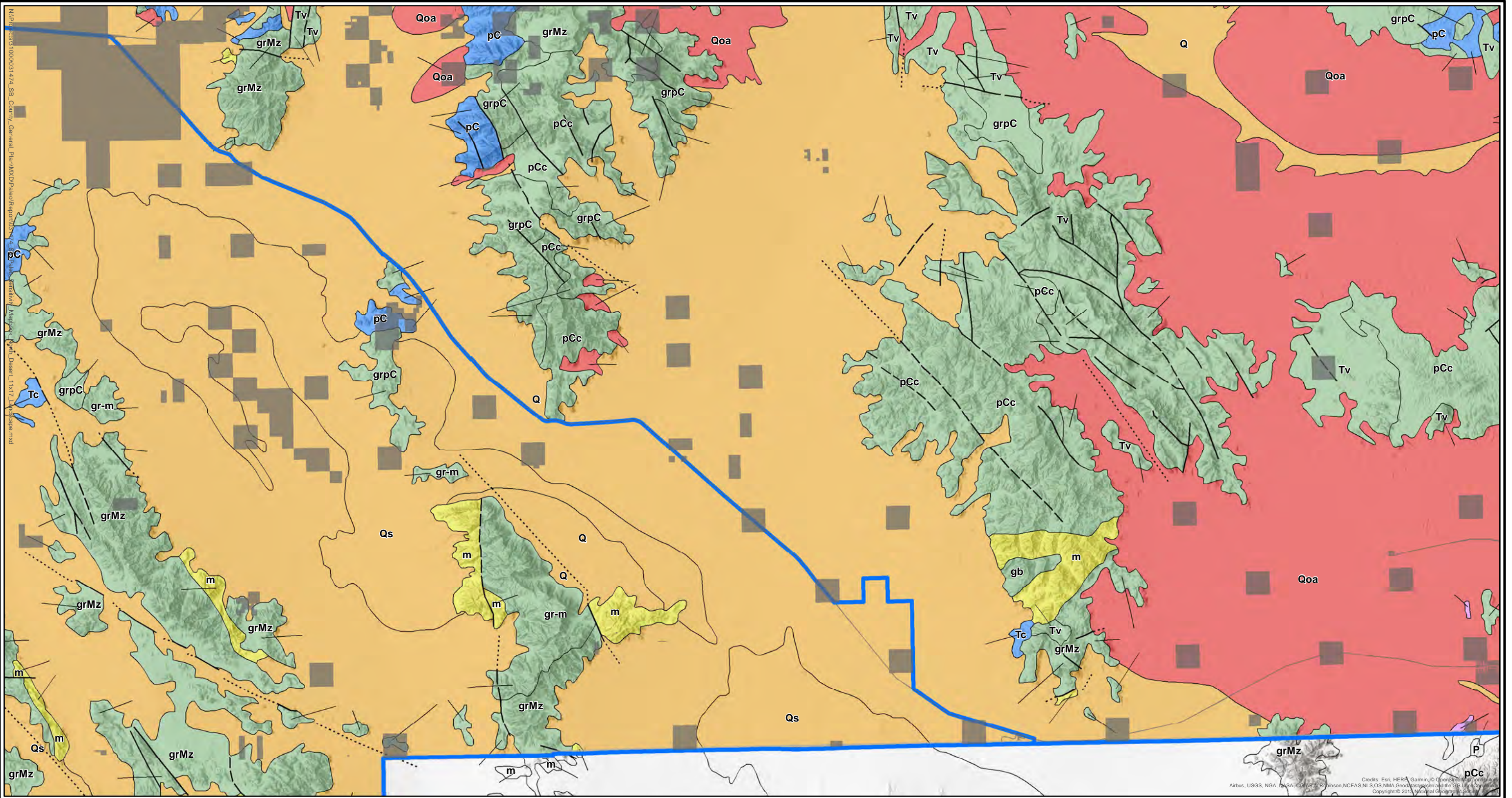


California Geological Survey (C.W. Jennings, 1977)
 San Bernardino County, CA
 NAD 1983 UTM Zone 11N
 5/31/2018

SWCA
 ENVIRONMENTAL CONSULTANTS

51 West Dayton Street
 Pasadena, California 91105

Phone: 626.240.0587
 Fax: 626.240.0607
 www.swca.com



Legend

North Desert Region	Sea
County Control Area	Varies
contact, certain	High
fault, approx. located	Low-to-High
fault, certain	Low
fault, concealed	None
thrust fault, certain (2)	



0 5 10 Miles
0 5 10 Kilometers
1:250,000

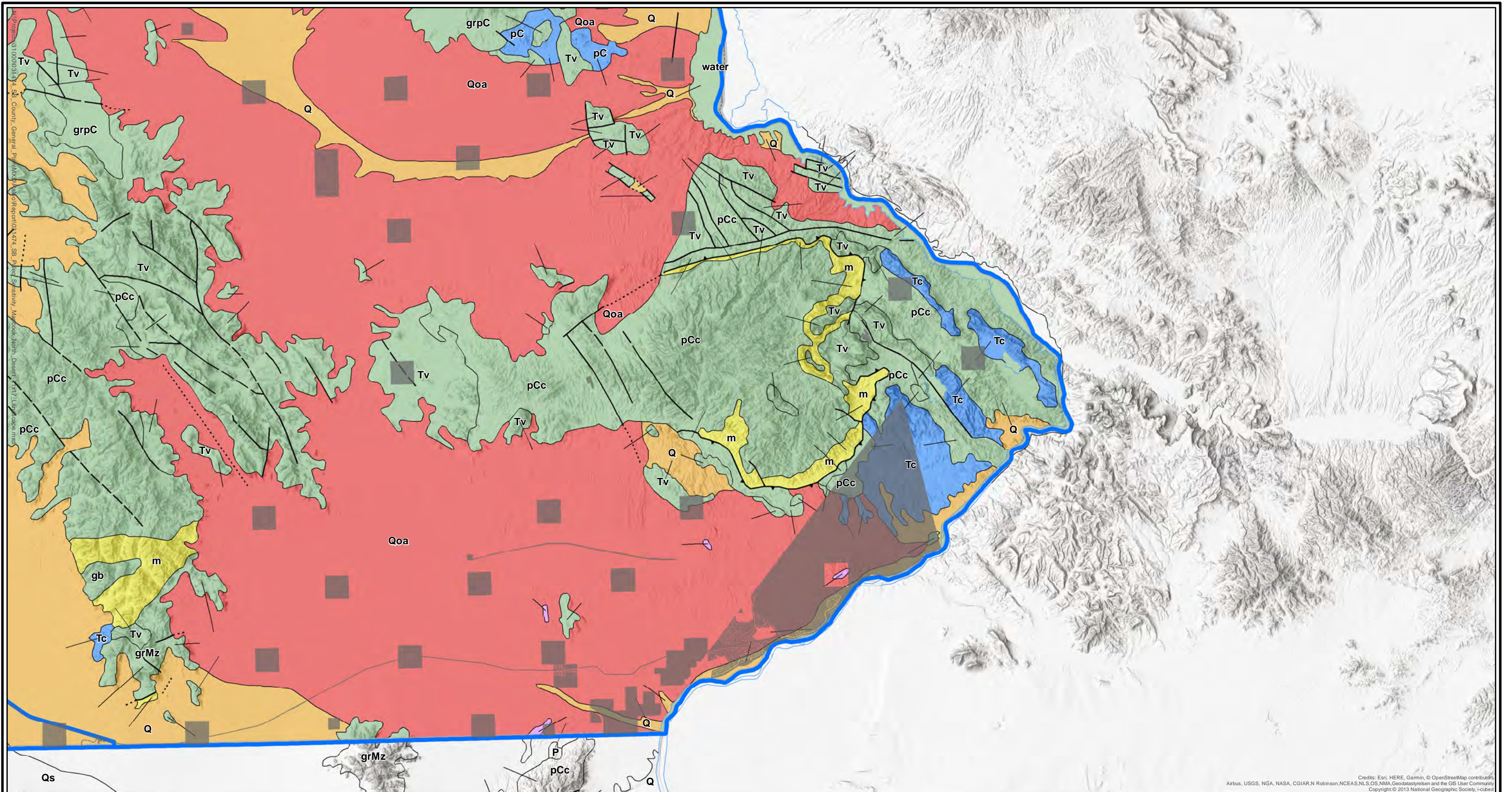
California Geological Survey (C.W. Jennings, 1977)
San Bernardino County, CA

NAD 1983 UTM Zone 11N
5/31/2018

SWCA
ENVIRONMENTAL CONSULTANTS

51 West Dayton Street
Pasadena, California 91105

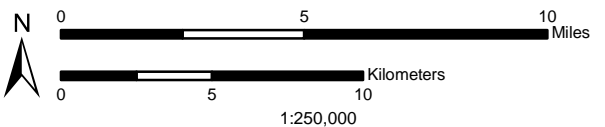
Phone: 626.240.0587
Fax: 626.240.0607
www.swca.com



Credits: Esri, HERE, Garmin, © OpenStreetMap contributors, Airbus, USGS, NGA, NASA, CGIAR, N Robinson, NCEAS, NLS, OS, NMA, Geodatasystem and the GIS User Community
 Copyright © 2013 National Geographic Society, i-cubed

- Legend**
- North Desert Region
 - water boundary
 - County Control Area
 - contact, certain
 - fault, approx. located
 - fault, certain
 - fault, concealed
 - scratch boundary
 - thrust fault, certain (2)

- Geologic Sensitivity**
- Sea
 - Varies
 - High
 - Low-to-High
 - Low
 - None



California Geological Survey (C.W. Jennings, 1977)
 San Bernardino County, CA
 NAD 1983 UTM Zone 11N
 5/31/2018



51 West Dayton Street
 Pasadena, California 91105

Phone: 626.240.0587
 Fax: 626.240.0607
 www.swca.com